

Fluke iSee™ Mobile Imaging Series ii01 Acoustic Camera for Smartphone



Fluke iSee ii01 Acoustic Camera for Smartphone
The acoustic expert in your pocket

Compact and light

Convenient and easy

Communication and sharing

Creative Imaging

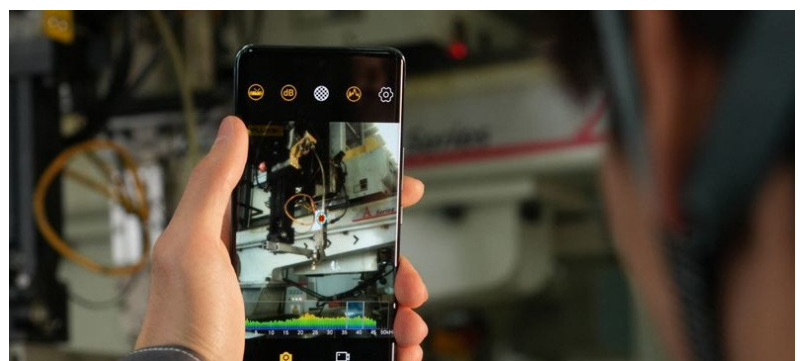
The new member of the Fluke iSee™ Mobile Imaging Series, the ii01 Acoustic Camera for Smartphone is allowed to directly connected to the Type C interface of a smart phone to achieve professional acoustic imaging. It can be used for detecting factory gas leaks, product air tightness, mechanical abnormal sounds anytime and anywhere. No need for complex operations or carrying heavy detection equipment, which greatly improves the troubleshooting efficiency .

Excellent Professional Acoustic Imaging

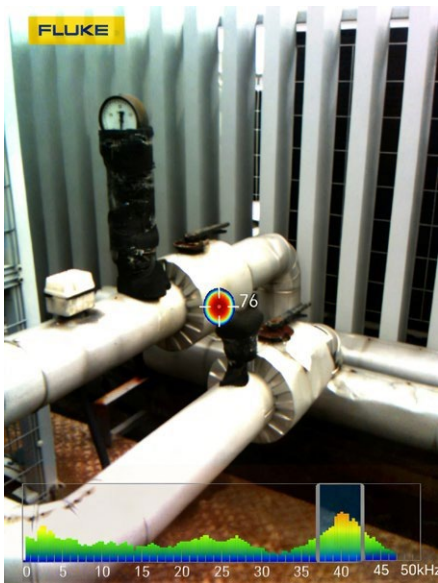
- **Professional view:** Integrating 16 high-precision MEMS sensors and combining with Fluke's SoundMap™ acoustic imaging technology, it can quickly locate the sources of sounds through imaging.
- **Wide applications:** Covering the sound wave frequency band range from 2k Hz to 48k Hz, it applies to common industrial application scenarios such as gas leaks, air tightness detection, and noise location.
- **Leaking mode:** 40kHz frequency band can be enabled with a single key on the main menu, which is used for detecting gas leaks quickly.
- **dB shown:** The screen shows the dB value of the target center point in real time while locating leaks, assisting in judgment and decision-making on site.

Unparalleled usability

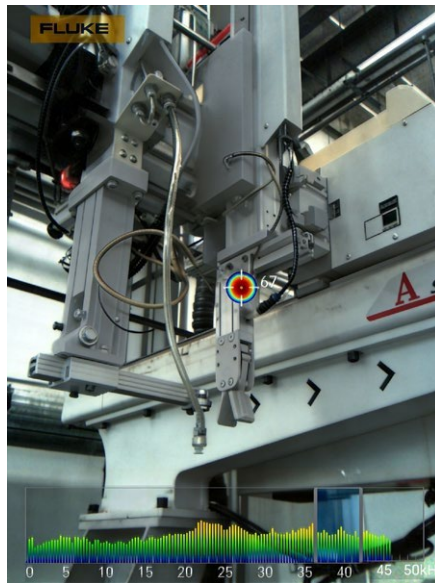
- **Plug and play:** it can be directly connected to the Type C interface of your smart phone to start the test without charging or turning it on.
- **Compact and light:** It is made of high-quality aluminium material for airway combined with an innovative compact design, which weighs only 50g and can be easily put in a pocket for use as needed without any burden.
- **Quick to get started:** It is designed with no buttons and a minimalist UI. You can get started in an instant without complicated operations.
- **Direct share:** Images and videos can be shared and reported anytime and anywhere via mobile phones, achieving communication as soon as possible.
- **Convenient management:** You can take images and videos up to 5 minutes long, which are directly stored in your phone's library with custom watermarks added for archiving conveniently.



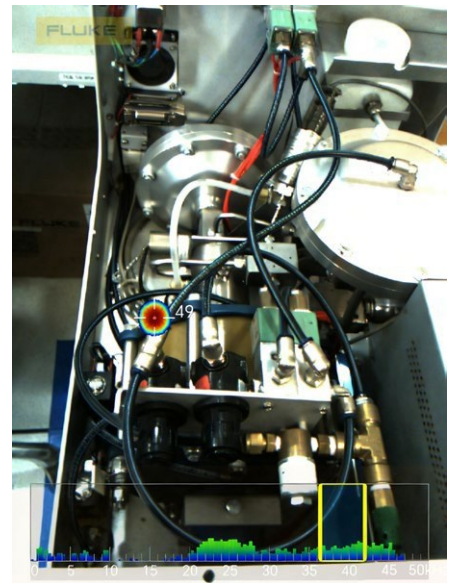
Application scenarios:



Pipeline leak detection



Compressed air leak detection of injection molding machines



Air tightness inspection of complicated equipment pipelines

iS **How to download the Fluke iSee™ application**

Minimalist UI design makes it easy to take images and videos, capture abnormal sounds, and share and communicate quickly.



**For Android devices, please scan the QR code above to download it
Fluke iSee™ application**

** Android™ 6.0 / HarmonyOS 2.0 and above supported, and the OTG feature needs to be enabled on the smart device*

Detailed Specifications

Performance specifications and features	
Microphone number	16 high-precision MEMS sensors
Frequency band	2k Hz to 48k Hz
Detection range	0.50 m to 50 m (based on site conditions)
Field of view (H x V)	50° x 38°
Frame rate	20 Hz
Sensitivity	-38 dBV
Signal-to-noise ratio	73 dBA
Visible lens resolution	2 MP
Acoustic image	SoundMap™ image
Quick leak detection mode	Leaking mode enabled: Frequency band locked at 37.4 kHz to 42.6 kHz Leaking mode disabled: Frequency band selected through dragging the slider by users
dB value of the target centerpoint	Yes, it can be enabled or disabled
Focal length	50cm to infinity
Image format	JPG, MP4 (up to 5 minutes)
Color palettes	3: IronRed, Blue-Red and Grayscale
Palette: Overly transparency	Yes, 0% ~ 100 %
Customized watermark	Image or English character watermarks can be set
General Specifications	
Interface	Type C
OS supported	Android/HarmonyOS
Operating temperature	0 °C to +40 °C
Storage temperature	-30 °C to +60 °C
Operating humidity	10% to 90% RH, non-condensing
Operating altitude	2000 m
Storage altitude	12000 m
Power consumption	1.2 W (Typical)
Ingress protection	IEC 60529: IP54
Size (L x W x H)	61 x 50 x 12 mm
Weight	50 g
EMC Environment	<p>IEC 61326-1: Electromagnetic environment for portable equipment CISPR 11: Group 1, Class A</p> <p>Group 1: Equipment intentionally generates and/or uses conductive-coupled RF energy, which is necessary for its internal operation.</p> <p>Class A: Equipment is suitable for use in all establishments other than domestic and those directly connected to a low-voltage power supply network that supplies buildings used for domestic purposes. There may be potential difficulties in ensuring electromagnetic compatibility in other environments due to conducted and radiated disturbances.</p> <p>Caution: This equipment is not intended for use in residential environments and may not provide adequate protection to radio reception in such environments.</p> <p>Class A Equipment (Industrial Broadcasting & Communication Equipment)</p> <p>Class A: Device meets requirements for industrial electromagnetic wave equipment and the seller or user should take notice of it. This equipment is intended for use in business environments and not to be used in homes.</p> <p>47 CFR Part 15 Subpart B This product is considered an exempt device per clause 15.103.</p>
International	
Korea (KCC)	
America (FCC)	
Warranty	2 years

Ordering Information

- Fluke ii01 Acoustic Camera for Smartphone

Standard accessories

- Fluke ii01 Acoustic Camera for Smartphone
- Black carrying case
- Packaging box
- Getting Started Guide



Fluke. Keeping your world up and running.®

FLUKE TECHNOLOGIES PVT. LTD.

Toll Free: 1800 419 3001

Email: info.india@fluke.com

Web: www.fluke.com/india

www.facebook.com/flukeindia